

FLAT TOP TOWER CRANE


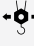




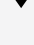


**Specifications:**

- ▶ Max jib length: 70,00 m
- ▶ Capacity at max length: 2,10 t
- ▶ Max capacity: 12,00 t

WORKS FOR YOU.™

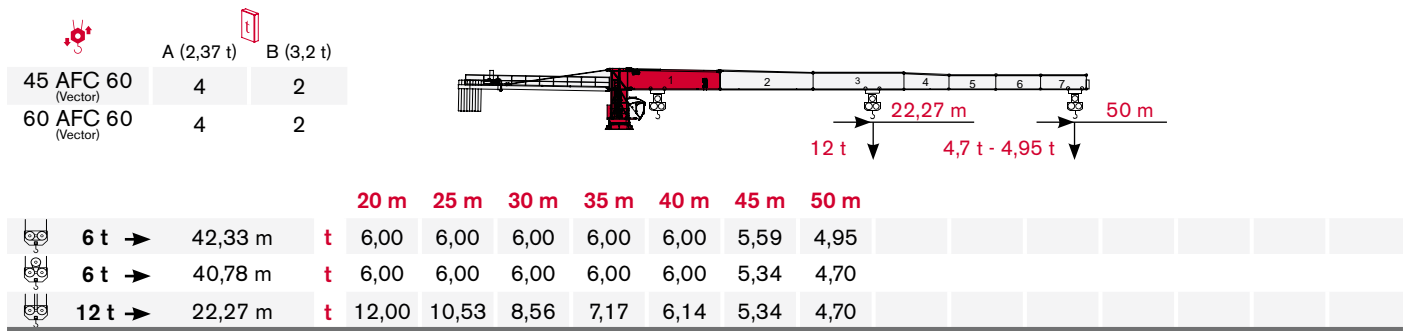
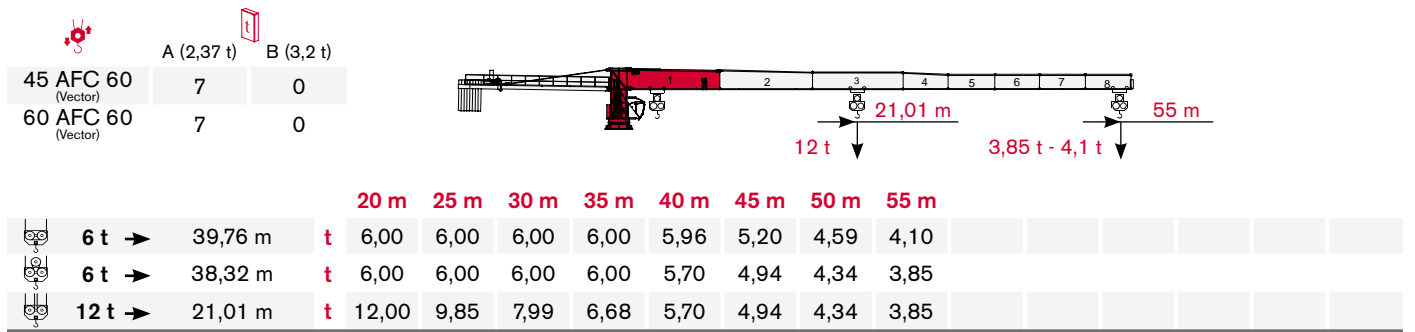
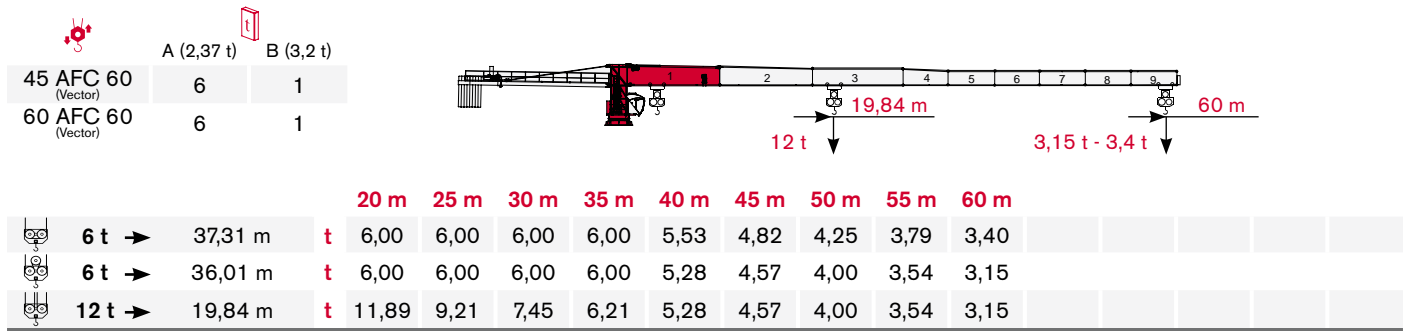
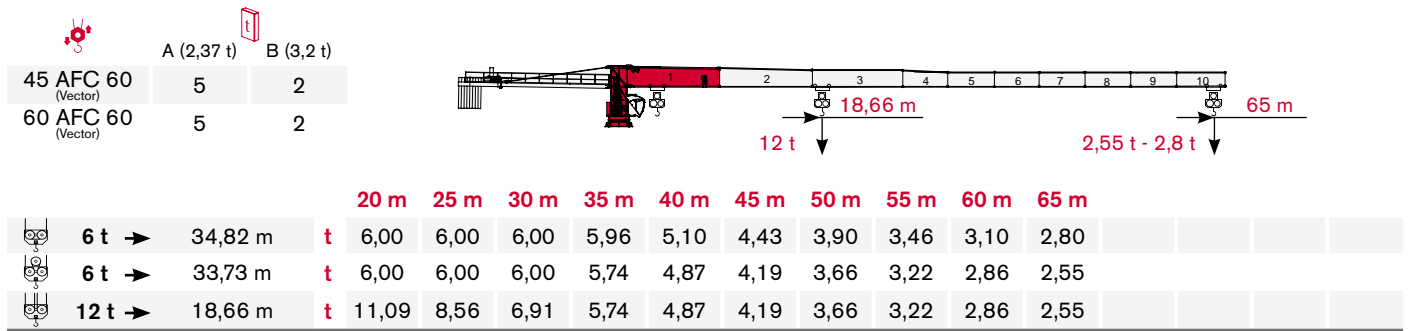
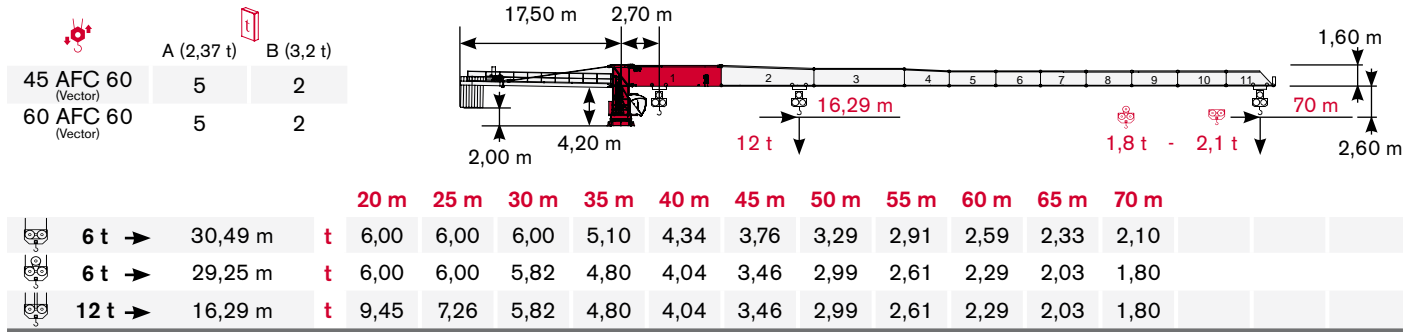
KEY

Zeichenerklärung · Légende · Leyenda · Legenda · legenda · условные обозначения

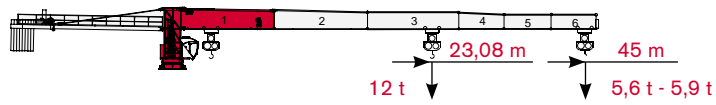
	Hoisting · Heben · Levage · Elevación · Sollevamento · Elevação · подъем
	Trolleying · Katzfahren · Distribution · Distribución · Traslazione carrello · Distribuição · перемещение
	Slewing · Schwenken · Orientation · Orientació · Rotazione · giro · поворот
	Travelling · Schienenfahren · Translation · Traslación · Traslazione · Móvel · Движение
	Directive on noise level · Richtlinie für den Schall-Leistungspegel · Directive sur le niveau acoustique · Directiva sobre el nivel acustico · Direttiva sul livello acustico · Directiva sobre nivel de ruidos · Директива по уровню шума
	Consult us · Auf Anfrage · Nous consulter · Consultarnos · Consultateci · Consulte-nos · Проконсультироваться с нами
	Power requirements · Geforderte Stromstärke · Puissance totale nécessaire · Potencia necesaria · Potenza totale richiesta · Requisitos de energia · Требования по питанию
	Power supply · Stromversorgung · Alimentation · Alimentación · Alimentazione · Fonte de alimentação · Питание
	In service · In Betrieb · En service · En servicio · In servizio · Em serviço · При работе
	Out of service · Außer Betrieb · Hors service · Fuera de servicio · Fuori servizio · Fora de serviço · В режиме простоя
H	Max. under hook height · Höchste Hakenhöhe · Hauteur maxi. sous crochet · Maxima altura bajo gancho · Altezza max. sotto gancio · alt. máx. sob o gancho · макс высота до крюка
	Without load, without ballast, max. jib and max. height · Ohne Last und Ballast, mit Maximalausleger und Maximalhöhe · A vide, sans lest, avec flèche et hauteur maximum · Sin carga, sin lastre, con pluma y altura máxima · A vuoto, senza zavorra, braccio max., altezza max. · Sem carga, sem lastro, lança máxima, altura máxima · Без груза, без балласта, на макс. Длине вспомогательной стрелы и макс. Высоте
	Counterweight · Gegengewicht · Lest de contre-flèche · Lastre de contra flecha · Zavorra controbraccio · Contrapeso · Противовес
C25	FEM 1004 Out of service wind condition · FEM 1004 Windverhältnisse im Außerbetriebszustand · FEM 1004 Conditions de vent hors service · FEM 1004 Condiciones de viento fuera de servicio · FEM 1004 Condizioni del vento in fuori servizio · FEM 1004 Condição do vento para fora de serviço · FEM 1004 Сила ветра, при которой работа запрещена

LOAD DIAGRAM

Lastkurven · Courbes de charges · Curvas de cargas · Diagramma di portata · Diagrama de carga · Схема нагрузок

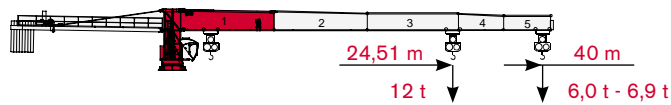


	A (2,37 t)	B (3,2 t)
45 AFC 60 (Vector)	5	1
60 AFC 60 (Vector)	5	1



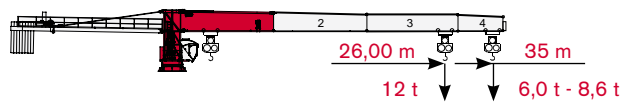
			20 m	25 m	30 m	35 m	40 m	45 m	
	6 t →	44,34 m	t	6,00	6,00	6,00	6,00	6,00	5,90
	6 t →	42,43 m	t	6,00	6,00	6,00	6,00	6,00	5,60
	12 t →	23,08 m	t	12,00	10,97	8,94	7,50	6,43	5,60

	A (2,37 t)	B (3,2 t)
45 AFC 60 (Vector)	6	0
60 AFC 60 (Vector)	6	0



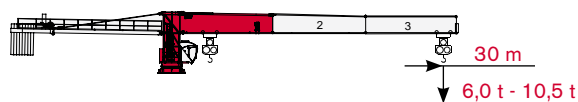
			20 m	25 m	30 m	35 m	40 m	
	6 t →	40,00 m	t	6,00	6,00	6,00	6,00	6,00
	6 t →	40,00 m	t	6,00	6,00	6,00	6,00	6,00
	12 t →	24,51 m	t	12,00	11,74	9,57	8,04	6,90

	A (2,37 t)	B (3,2 t)
45 AFC 60 (Vector)	3	2
60 AFC 60 (Vector)	3	2



			20 m	25 m	30 m	35 m	
	6 t →	35,00 m	t	6,00	6,00	6,00	6,00
	6 t →	35,00 m	t	6,00	6,00	6,00	6,00
	12 t →	26,00 m	t	12,00	12,00	10,23	8,60

	A (2,37 t)	B (3,2 t)
45 AFC 60 (Vector)	5	0
60 AFC 60 (Vector)	5	0




			20 m	25 m	30 m	
	6 t →	30,00 m	t	6,00	6,00	6,00
	6 t →	30,00 m	t	6,00	6,00	6,00
	12 t →	26,61 m	t	12,00	12,00	10,50

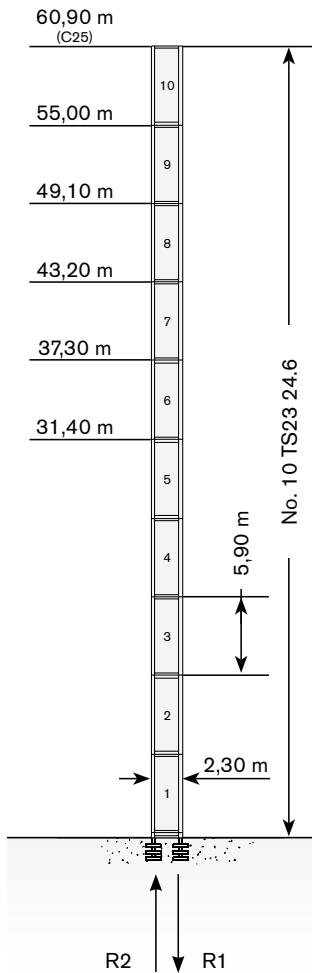
TOWER

Turn · Tour · Torre · Torre · Torre · Башня


Standard Configurations · Standardkonfiguration · Standard Implantations ·
Implantaciones Standard · Installazioni Standard · Configuração padrão ·
стандартная конфигурация крана

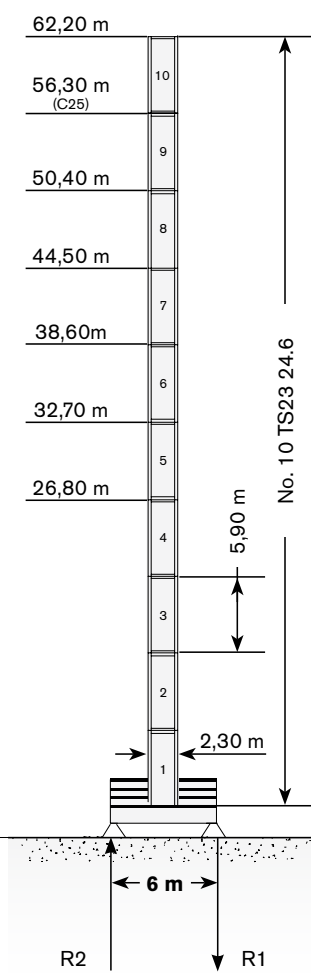
Tower: RS23 & Basement: R

	●	◊
R1	-1993 kN	-2580 kN
R2	1465 kN	2161 kN
	837 kN	



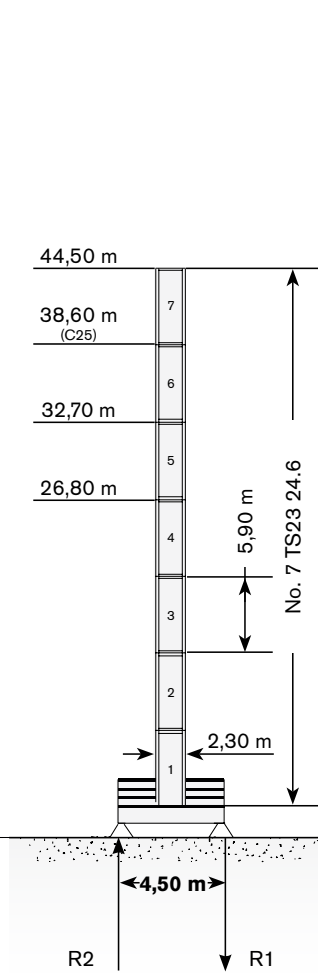
Tower: TS23 & Basement: F

	●	◊
R1	-1280 kN	-1669 kN
R2	0 kN	0 kN
	941 kN	




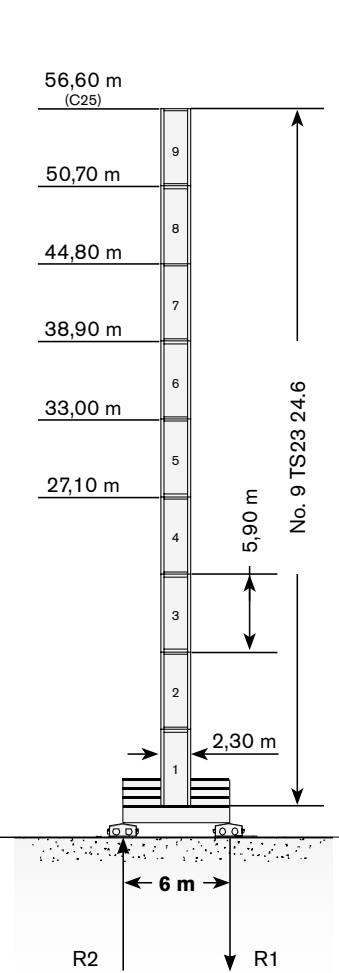
Tower: TS23 & Basement: F1

	●	◊
R1	-1202 kN	-1064 kN
R2	-133 kN	-384 kN
	653 kN	



Tower: TS23 & Basement: T

	●	◊
R1	-1993 kN	-2580 kN
R2	1465 kN	2161 kN
	837 kN	








Max. under hook height · Höchste Hakenhöhe · Hauteur maxi. sous crochet · Maxima altura bajo gancho · Altezza max. sotto gancio · alt. máx. sob o gancho · макс высота до крюка

Different heights and tower combinations are available; please consult us · Andere Höhen und Turmkombinationen auf Anfrage · Différentes hauteurs et combinaisons de tour sont disponibles; nous consulter · Hay diferentes alturas y combinaciones de torre disponibles. Consulté-nos · Altezze diverse e combinazioni di torre sono disponibili; consultateci · Diferentes alturas e combinações de torres disponiveis; fale conosco · Возможны другие сочетания высоты и конфигурации башни; проконсультируйтесь с нами

MECHANISMS








Antriebe · Mécanismes · Mecanismos · Meccanismi · Mecanismo · Механизм

Power supply · Stromversorgung · Alimentation · Suministro eléctrico · Alimentazione · Requisitos de energia · Требования по питанию

				
	45 AFC 60	95 kVA*	400V - 50Hz / 460V - 60Hz	2000/14/CE modificata
	60 AFC 60	115 kVA*	400V - 50Hz / 460V - 60Hz	2000/14/CE modificata

* Crane without travelling equipment – Three movements simultaneous at 90% · Krane ohne Schienenfahren – Drei gleichzeitige Bewegungen mit 90% · Grue sans translation – Trois mouvements simultanés à 90% · Grúa sin traslación – Tres movimientos contemporáneos hechos al 90% · Gru senza traslazione – Tre movimenti contemporanei al 90% · Guindaste sem equipamento de translação – três movimentos simultâneos a 90% · Кран без транспортируемого оборудования – движение груза в трех плоскостях возможно при 90% нагрузки

Hoisting · Heben · Levage · Elevación · Sollevamento · Elevação · Подъем

			t	m/min	kW	
	45 AFC 60 (Vector)		6	0 → 5	45	680 m
			6	5 → 15		
			6	15 → 34		
			3	34 → 63		
			1	63 → 124		
			12	0 → 2		
			12	2 → 7		
			12	7 → 17		
			6	17 → 32		
			2	32 → 62		
	60 AFC 60 (Vector)		6	0 → 5	60	680 m
			6	5 → 15		
			6	15 → 44		
			2,3	44 → 106		
			1,3	106 → 162		
			12	0 → 2		
			12	2 → 7		
			12	7 → 22		
			4,6	22 → 53		
			2,6	53 → 81		