

FLAT TOP TOWER CRANE



Specifications:

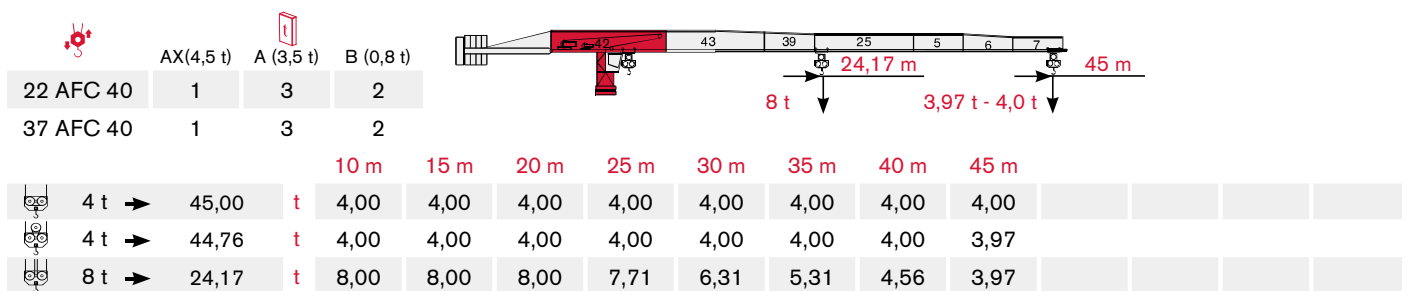
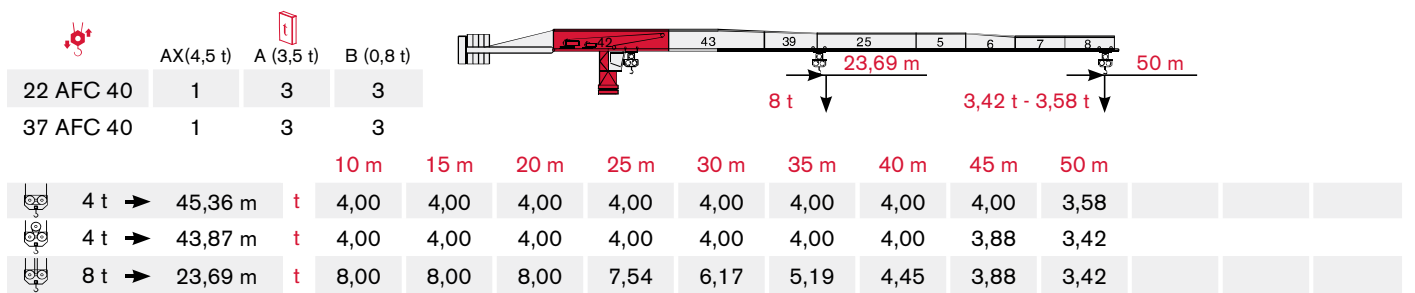
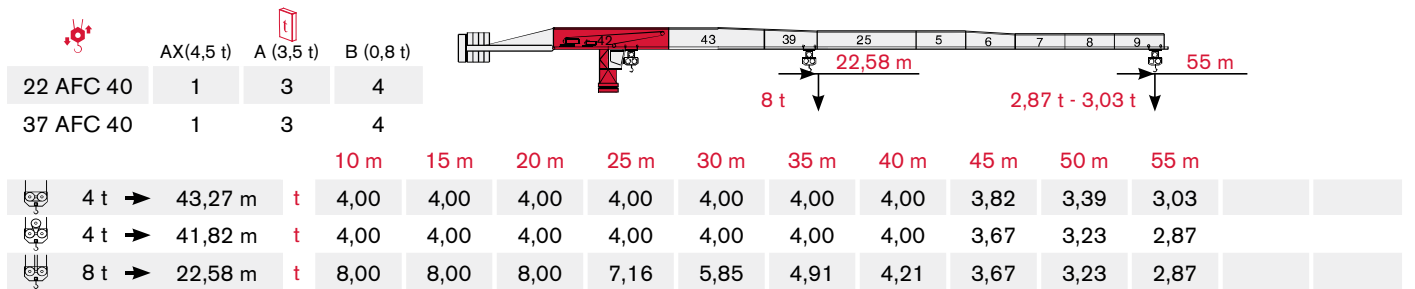
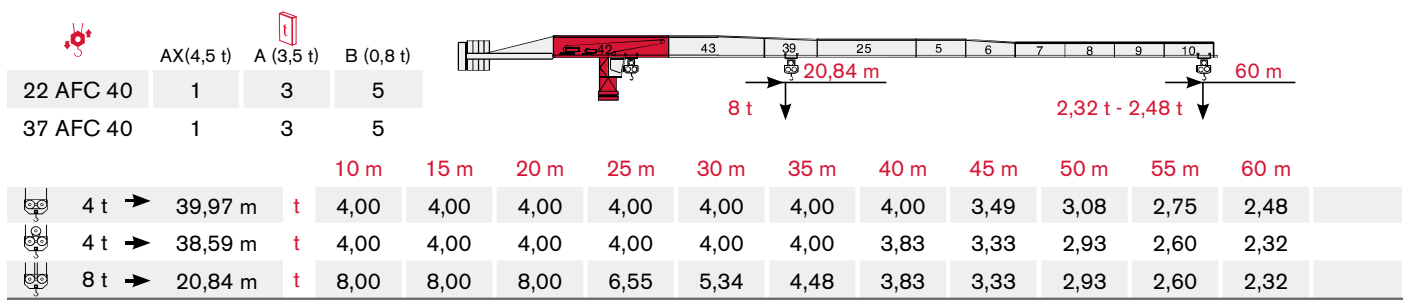
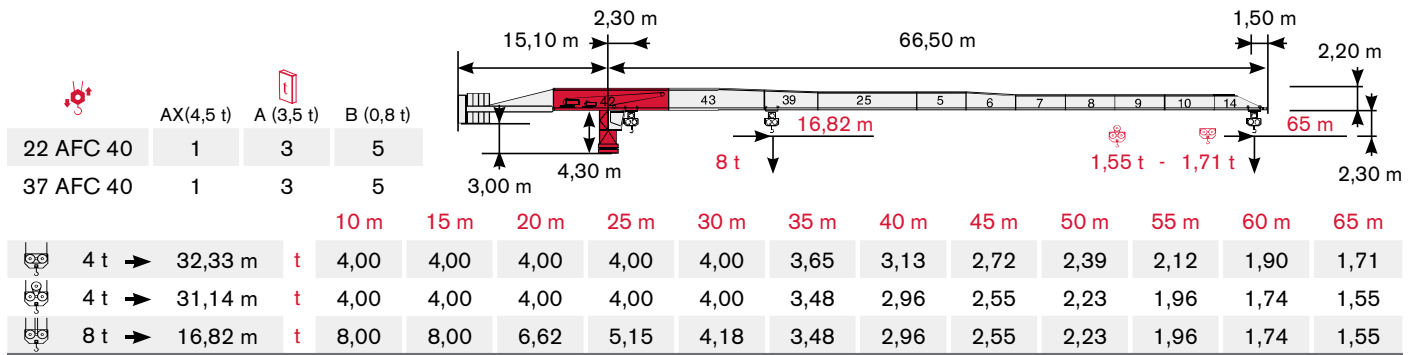
- ▶ Max jib length: 65,00 m
- ▶ Capacity at max length: 1,71 t
- ▶ Max capacity: 8,00 t

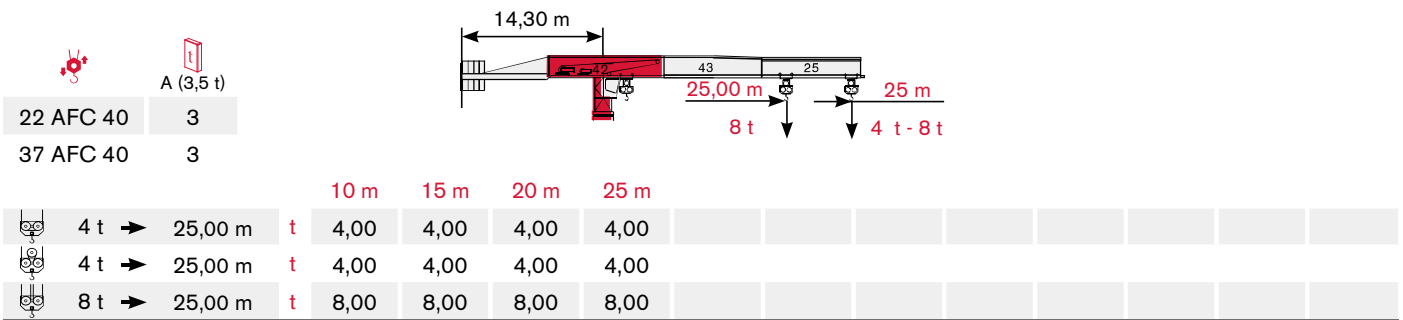
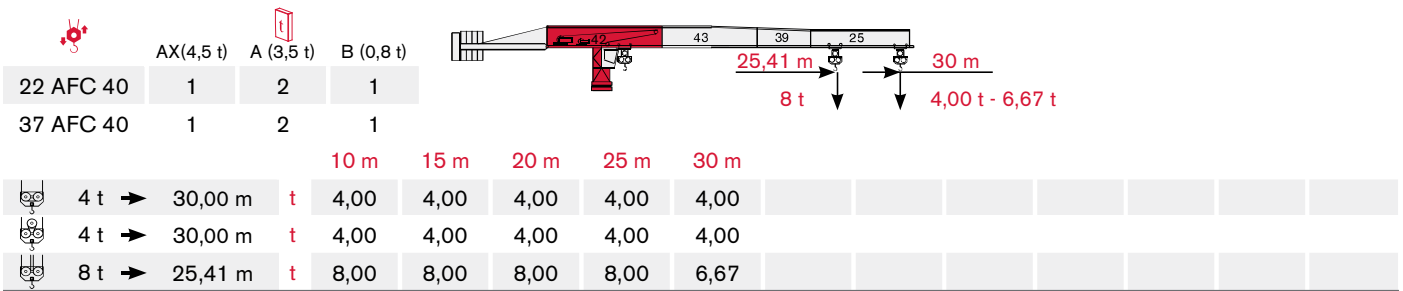
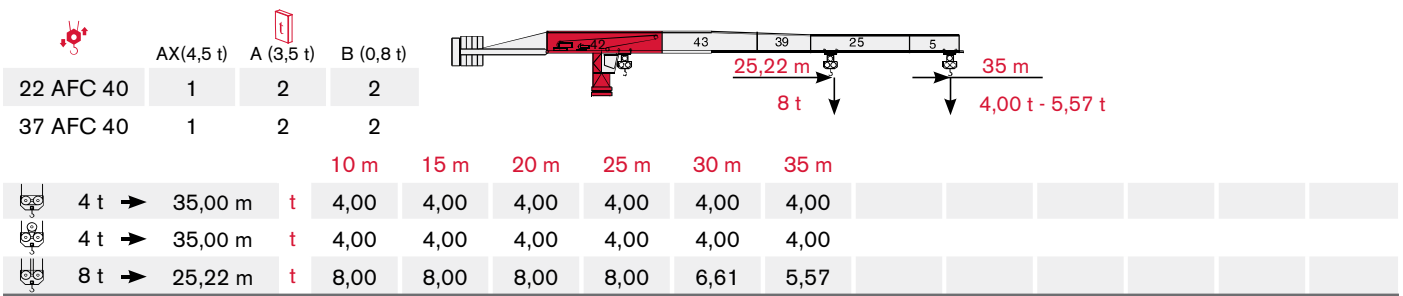
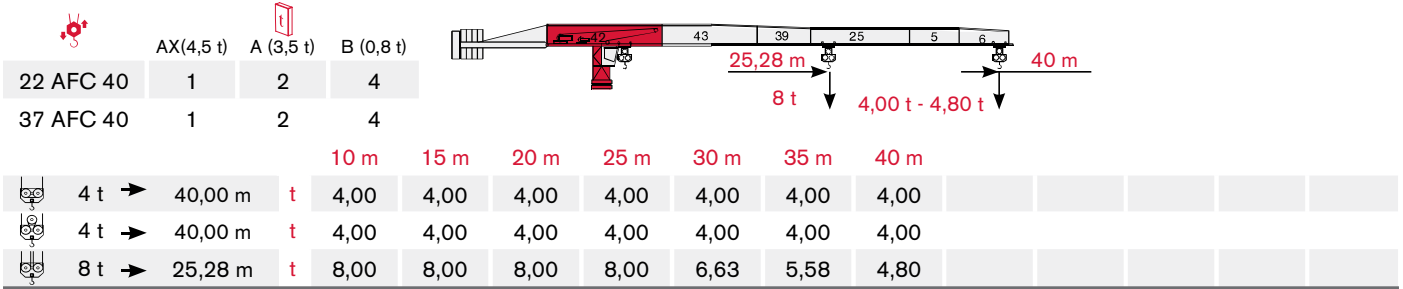
WORKS FOR YOU.™

LOAD DIAGRAM

Diagramma di portata · Lastkurven · Courbes de charges · Curvas de cargas · Diagrama de carga · Диаграмма грузоподъёмности

TEREX POWER PLUS





TOWER

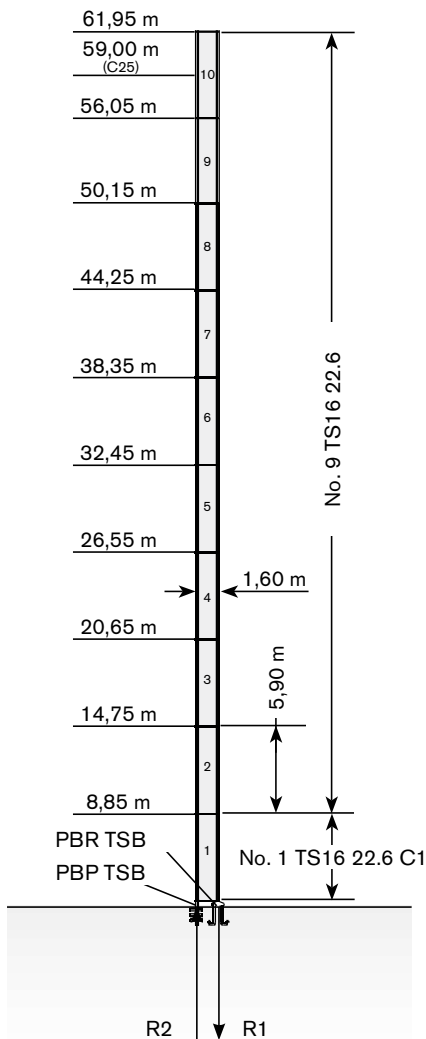
Torre · Turm · Tour · Torre · Torre · Башня

Standard Configurations · Installazioni Standard · Standardkonfiguration · Standard Implantations · Implantaciones Standard · Configuração padrão · Стандартная конфигурация крана

TS16

Tower: TS16 & Basement: R1

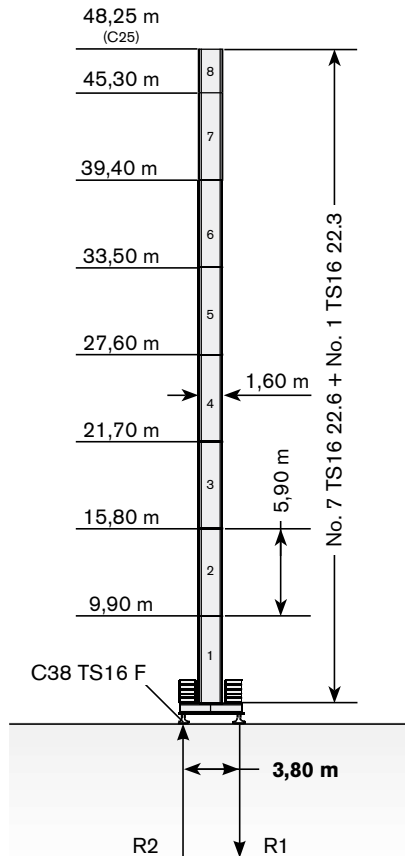
	●	◊
R1	-1760 kN	-2165 kN
R2	1395 kN	1845 kN
	655 kN	



→	max. H (m)	
	FEM 1001	FEM 1005 C25
25-45 m	61,95	59,00
50-65 m	59,00	56,05

Tower: TS16 & Basement: F1

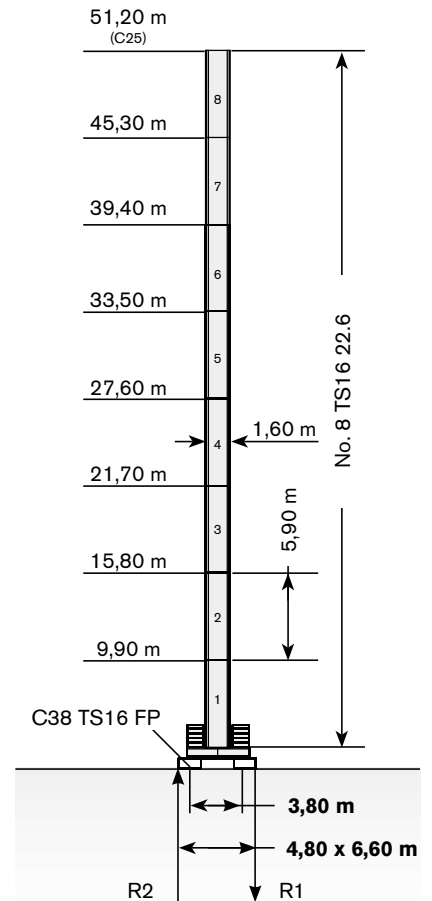
	●	◊
R1	-925 kN	-1070 kN
R2	0 kN	0 kN
	660 kN	



→	max. H (m)	
	FEM 1001	FEM 1005 C25
25-45 m	48,25	48,25
50-65 m	48,25	48,25

Tower: TS16 & Basement: FP1

	●	◊
R1	-995 kN	-1170 kN
R2	0 kN	0 kN
	660 kN	



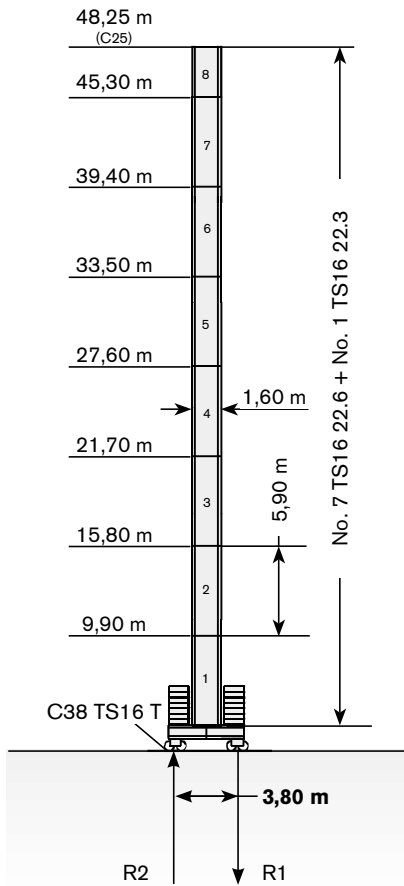
→	max. H (m)	
	FEM 1001	FEM 1005 C25
25-45 m	51,20	51,20
50-65 m	51,20	51,20

Max. under hook height · Altezza max. sotto gancio · Höchste Hakenhöhe · Hauteur maxi. sous crochet · Maxima altura bajo gancho · Alt. máx. sob o gancho · Макс высота крюка

Different heights and tower combinations are available; please consult us · Altezze diverse e combinazioni di torre sono disponibili; consultateci · Andere Höhen und Turmkombinationen auf Anfrage · Différentes hauteurs et combinaisons de tour sont disponibles; nous consulter · Hay diferentes alturas y combinaciones de torre disponibles. Consúltenos · Diferentes alturas e combinações de torres disponíveis; fale conosco · Возможны другие сочетания высоты и конфигурации башни; проконсультируйтесь с нами

Tower: TS16 & Basement: T1

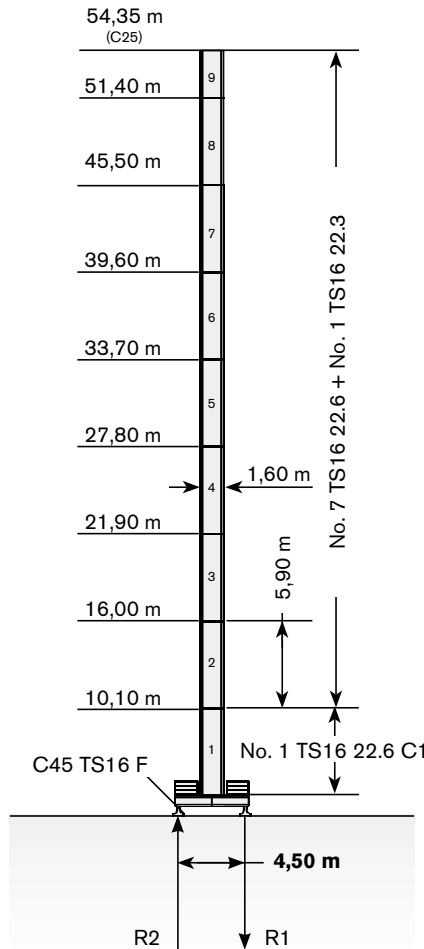
	●	◊
R1	-1025 kN	-1070 kN
R2	0 kN	0 kN
	660 kN	



→	max. H (m)	
	FEM 1001	FEM 1005 C25
25-45 m	48,25	48,25
50-65 m	48,25	48,25

Tower: TS16 & Basement: F2

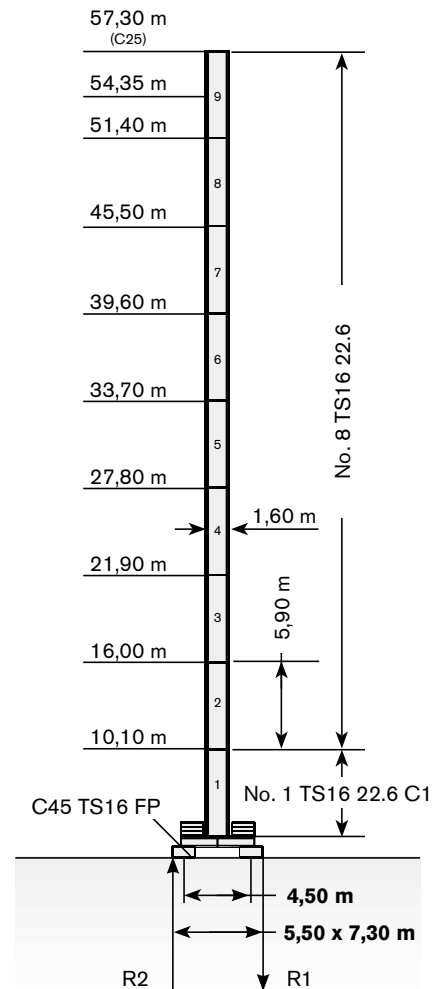
	●	◊
R1	-890 kN	-1150 kN
R2	0 kN	0 kN
	690kN	



→	max. H (m)	
	FEM 1001	FEM 1005 C25
25-45 m	54,35	54,35
50-65 m	54,35	54,35

Tower: TS16 & Basement: FP2

	●	◊
R1	-955 kN	-1155 kN
R2	0 kN	0 kN
	690 kN	



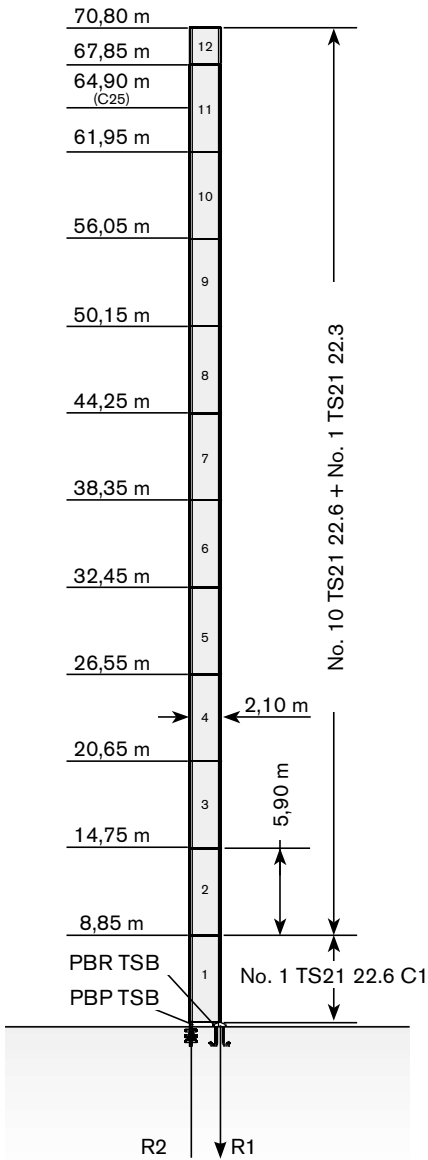
→	max. H (m)	
	FEM 1001	FEM 1005 C25
25-45 m	57,30	57,30
50-65 m	57,30	54,35

The available lengths for the TS tower sections are 11.8 m, 5.9 m, 2.95 m. · Le prolonghe TS sono disponibili in lunghezze 11.8 m, 5.9 m, 2.95 m. · Die Turmschüsse TS sind mit Längen 11.8 m, 5.9 m, 2.95 m verfügbar. · Les éléments de mât TS sont disponibles en longueur 11.8 m, 5.9 m, 2.95 m. · Los tramos de torre TS son disponibles en las medidas de largo 11.8 m, 5.9 m, 2.95 m. · Os comprimentos disponíveis para elementos de torre TS são: 11.8m, 5.9m e 2.95m. · Длина поставляемых секций башни TS - 11.8 м, 5.9 м, 2.95 м.

TS21


Tower: TS21 & Basement: R2

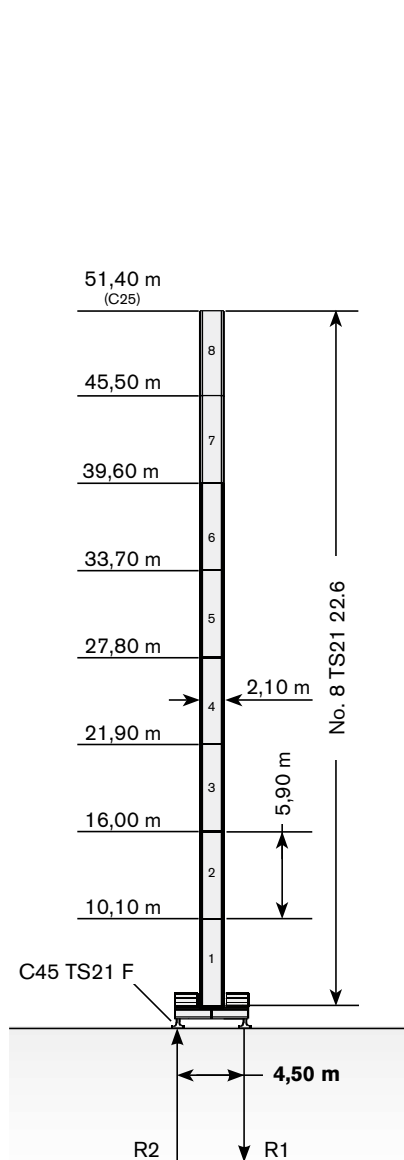
R1	-1445 kN	-2180 kN
R2	1040 kN	1815 kN
	730 kN	



→	max. H (m)	
	FEM 1001	FEM 1005 C25
25-45 m	70,80	64,90
50-65 m	67,80	61,95


Tower: TS21 & Basement: F3

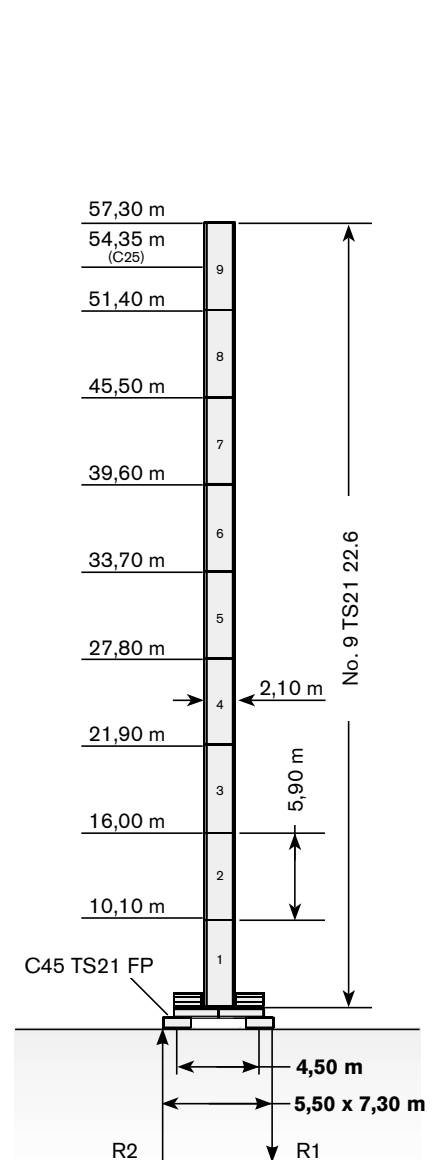
R1	-860 kN	-1035 kN
R2	0 kN	0 kN
	710 kN	



→	max. H (m)	
	FEM 1001	FEM 1005 C25
25-45 m	51,40	51,40
50-65 m	51,40	51,40

Tower: TS21 & Basement: FP3

R1	-940 kN	-1180 kN
R2	0	0
	740 kN	



→	max. H (m)	
	FEM 1001	FEM 1005 C25
25-45 m	57,30	54,35
50-65 m	57,30	54,35

The available lengths for the TS tower sections are 11.8 m, 5.9 m, 2.95 m. · Le prolonghe TS sono disponibili in lunghezze 11.8 m, 5.9 m, 2.95 m. · Die Turmschüsse TS sind mit Längen 11.8 m, 5.9 m, 2.95 m verfügbar. · Les éléments de mât TS sont disponibles en longueur 11.8 m, 5.9 m, 2.95 m. · Los tramos de torre TS son disponibles en las medidas de largo 11.8 m, 5.9 m, 2.95 m. · Os comprimentos disponíveis para elementos de torre TS são: 11.8m, 5.9m e 2.95m. · Длина поставляемых секций башни TS - 11.8 м, 5.9 м, 2.95 м.


TOWER

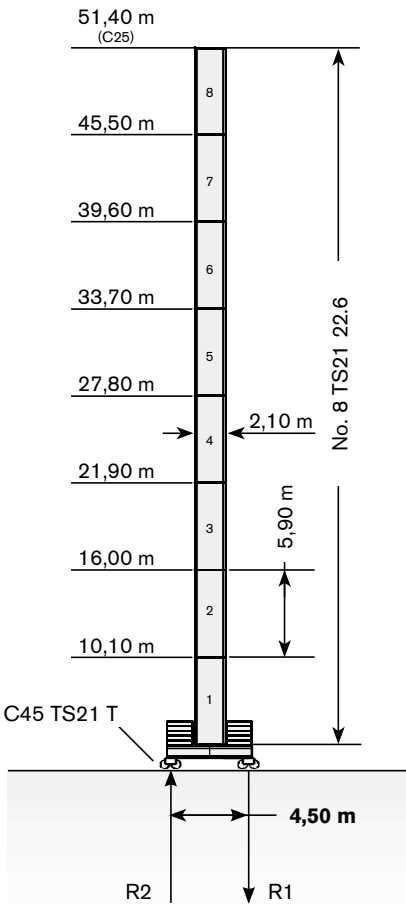
Torre · Turm · Tour · Torre · Torre · Башня

Standard Configurations · Installazioni Standard · Standardkonfiguration · Standard Implantations · Implantaciones Standard · Configuração padrão · Стандартная конфигурация крана

TS21


Tower: TS21 & Basement: T3

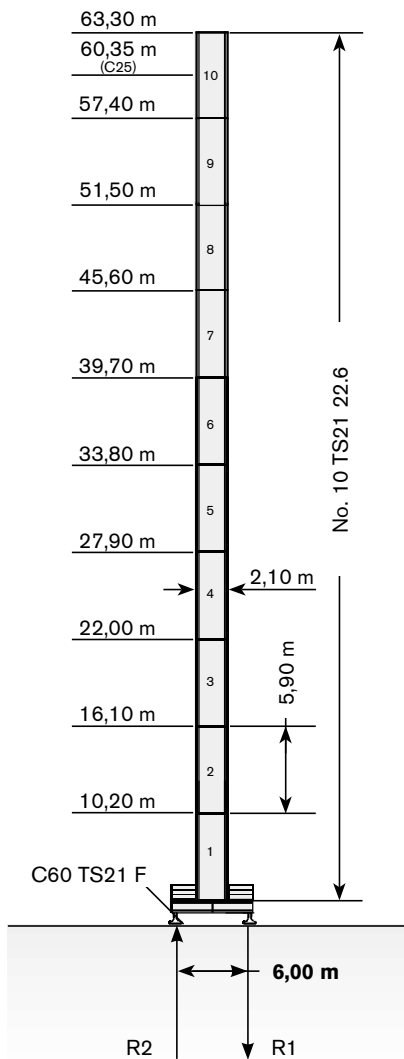
	●	◊
R1	-920 kN	-1035 kN
R2	0 kN	0 kN
	710 kN	



→	max. H (m)	
	FEM 1001	FEM 1005 C25
25-45 m	51,40	51,40
50-65 m	51,40	51,40


Tower: TS21 & Basement: F4

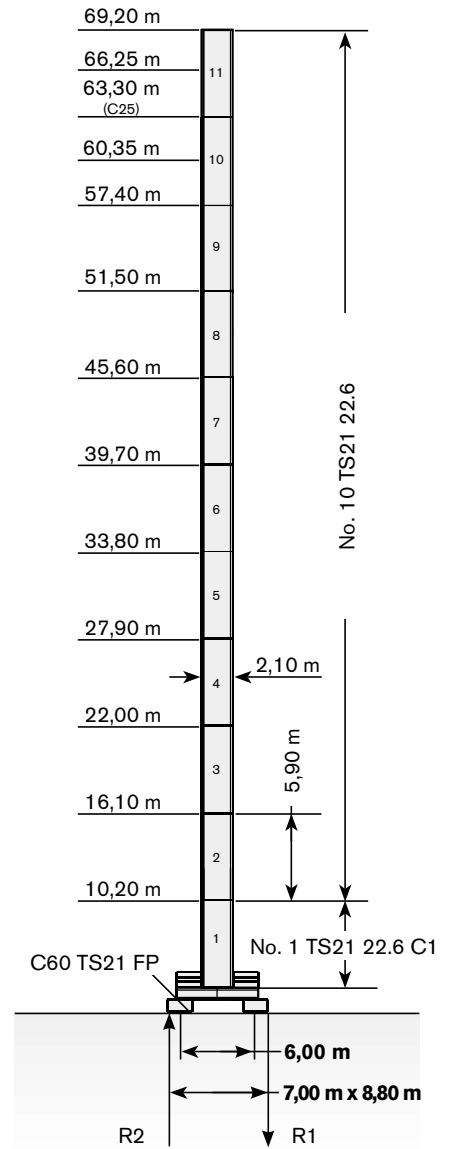
	●	◊
R1	-805 kN	-1085 kN
R2	0 kN	0 kN
	790 kN	



→	max. H (m)	
	FEM 1001	FEM 1005 C25
25-45 m	63,30	60,35
50-65 m	63,30	57,40

Tower: TS21 & Basement: FP4

	●	◊
R1	-890 kN	-1195 kN
R2	0 kN	0 kN
	805 kN	



→	max. H (m)	
	FEM 1001	FEM 1005 C25
25-45 m	69,20	63,30
50-65 m	66,25	60,35






Max. under hook height · Altezza max. sotto gancio · Höchste Hakenhöhe · Hauteur maxi. sous crochet · Maxima altura bajo gancho · Alt. máx. sob o gancho · Макс высота крюка

Different heights and tower combinations are available; please consult us · Altezze diverse e combinazioni di torre sono disponibili; consultateci · Andere Höhen und Turmkombinationen auf Anfrage · Différentes hauteurs et combinaisons de tour sont disponibles; nous consulter · Hay diferentes alturas y combinaciones de torre disponibles. Consúltenos · Diferentes alturas e combinações de torres disponíveis; fale conosco · Возможны другие сочетания высоты и конфигурации башни; проконсультируйтесь с нами

MECHANISMS




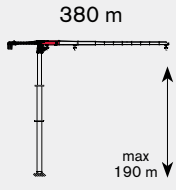

Meccanismi · Antriebe · Mécanismes · Mecanismos · Mecanismo · Механизм



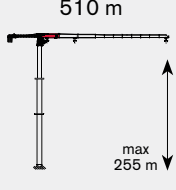

Power supply · Alimentazione · Stromversorgung · Alimentation · Suministro eléctrico · Requisitos de energia · Требования по питанию

				
	22 AFC 40	46 → 25 kVA*	400V - 50Hz / 460V - 60Hz	2000/14/CE modificata
	37 AFC 40	60 → 36 kVA*	400V - 50Hz / 460V - 60Hz	2000/14/CE modificata

* - kVA +

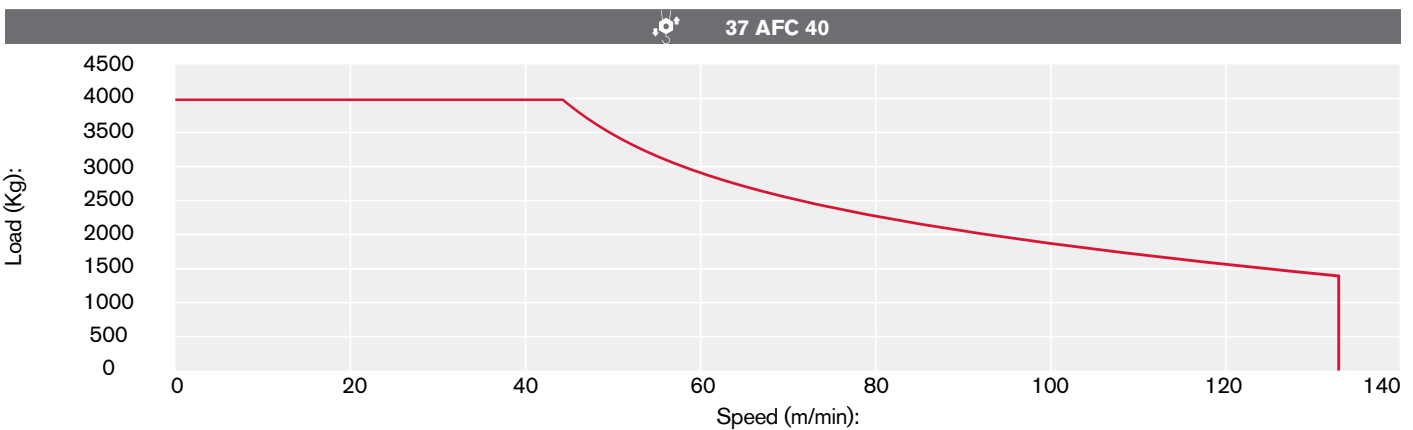
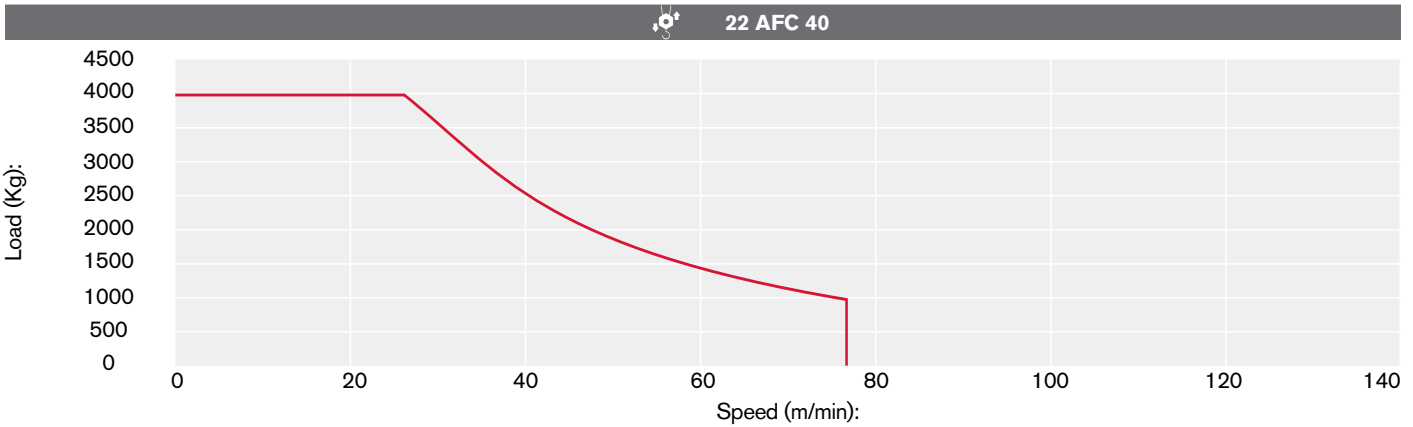
Hoisting · Sollevamento · Heben · Levage · Elevación · Elevação · Подъем

			t	m/min	kW	
	22 AFC 40		4	0 → 27	22	 380 m max 190 m
			3	0 → 35		
			2	0 → 51		
			1,5	0 → 65		
			1	0 → 78		
			8	0 → 14		
			6	0 → 18		
			4	0 → 26		
			3	0 → 34		
			2,5	0 → 39		



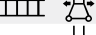



	37 AFC 40		4	0 → 44	37	 510 m max 255 m
			3	0 → 57		
			2	0 → 82		
			1,5	0 → 105		
			1	0 → 132		
			8	0 → 22		
			6	0 → 28		
			4	0 → 41		
			3	0 → 52		
			2	0 → 66		

Meccanismi · Antriebe · Mécanismes · Mecanismos · Mecanismo · Механизм

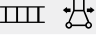
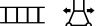
Hoisting Speed · Velocità di Sollevamento · Heben Geschwindigkeit · Vitesse de Levage · Velocidad de Elevación · Velocidade de içamento · Скорость подъема



Additional Specifications · Altre movimentazioni · Weitere Leistungsdaten · Spécifications additionnelles · Otras prestaciones · Especificações adicionais · Дополнительные спецификации

	DVF 3 6	0 → 40 → 80 m/min	5,5 kW
	SVF 2 2 6	0.7 r.p.m	2 x 5.5 kW
	TAD 2RP 2M4	0 → 24 m/min	2 x 4 kW
	TAD 2RG 4M3	0 → 24 m/min	4 x 3 kW
			

Tower height max.

		T2	T3	T4
	TAD 2RP 2M4	39,60 m	39,60 m	39,70 m
	TAD 2RG 4M3	> 39,60 m	> 39,60 m	> 39,70m