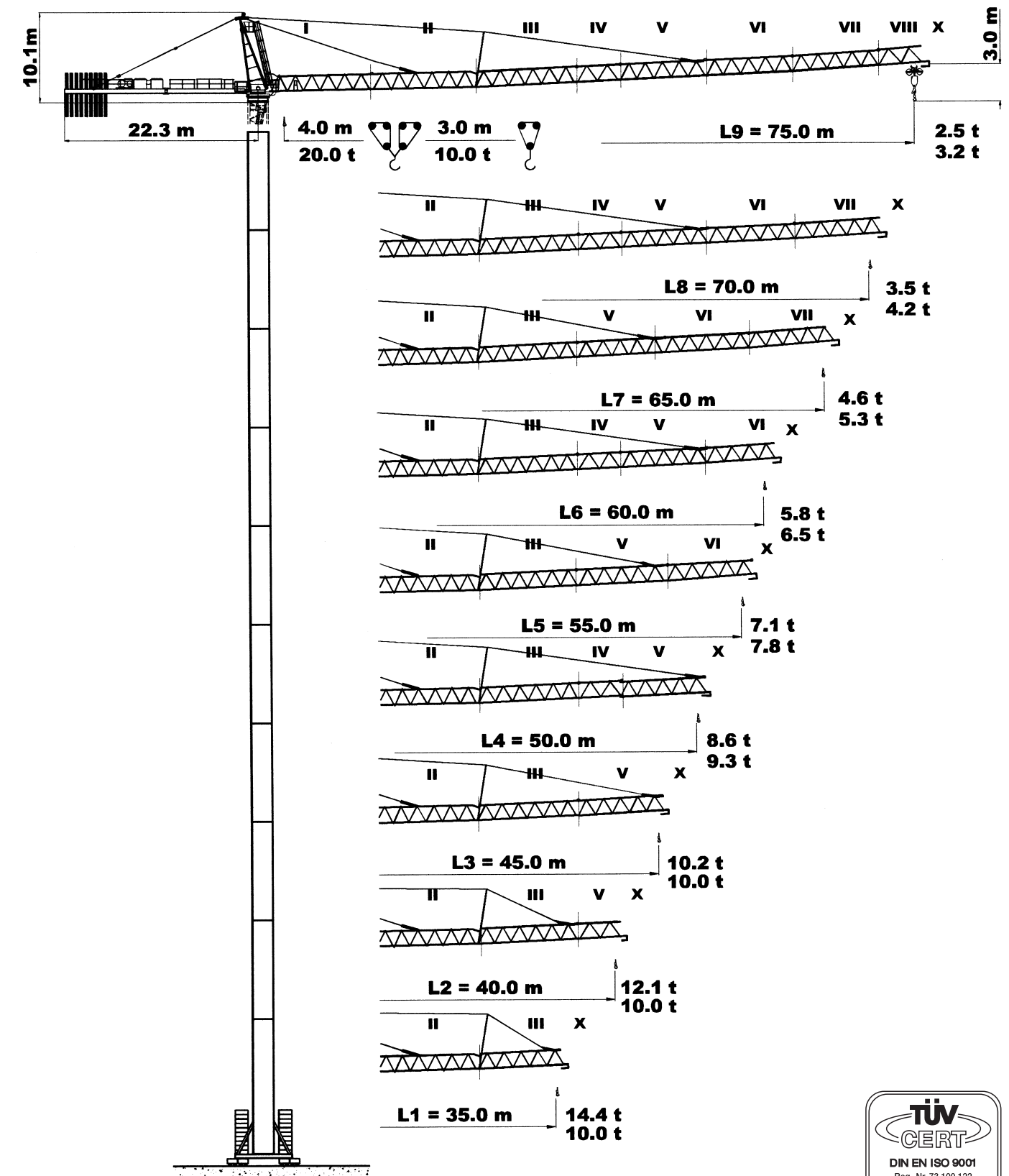


Geschwindigkeiten • Speeds • Vitesse

FU 9-200/4		$v = 0 \rightarrow 80 \text{ m/min.}$	$1 \times 9.0 \text{ kW}$	Bei 440 V bzw. 480 V / 60 Hz erhöhen sich die Antriebsleistungen um ~10% bzw. ~20% und Geschwindigkeiten um ~20%. FU-Antriebe ausgenommen.	
SR 10-190/4		$v = 0 \rightarrow 30 \text{ m/min.}$	$4 \times 7.5 \text{ kW}$	At 440 V or 480 V / 60 Hz the power of the drive units are increased by ~10% or ~20% and the speeds by ~20%. Excluded FC-drives.	
K WB 120/4		$v = 0 \rightarrow 0.75 \text{ min}^{-1}$	L1 - L5 $2 \times 7.0 \text{ kW}$ L6 - L9 $3 \times 7.0 \text{ kW}$		
HK max. = 250 m			5- Lagen / 5-layers / 5-couches		400 V / 50 Hz / 3 ph
Type SR WB 66-100/4F 66.0 kW		$\rightarrow 112 \text{ m/min}$	2 500 kg	$\rightarrow 56 \text{ m/min}$	5 000 kg
		$\rightarrow 70 \text{ m/min}$	4 200 kg	$\rightarrow 35 \text{ m/min}$	8 400 kg
		$\rightarrow 45 \text{ m/min}$	7 100 kg	$\rightarrow 22 \text{ m/min}$	14 200 kg
		$\rightarrow 28 \text{ m/min}$	10 000 kg	$\rightarrow 14 \text{ m/min}$	20 000 kg
HK max. = 320 m			6- Lagen / 6-layers / 6-couches		
Type SR WB 102-100/4F 102.0 kW		$\rightarrow 160 \text{ m/min}$	2 800 kg	$\rightarrow 80 \text{ m/min}$	5 600 kg
		$\rightarrow 100 \text{ m/min}$	4 800 kg	$\rightarrow 50 \text{ m/min}$	9 600 kg
		$\rightarrow 63 \text{ m/min}$	8 000 kg	$\rightarrow 31 \text{ m/min}$	16 000 kg
		$\rightarrow 40 \text{ m/min}$	10 000 kg	$\rightarrow 20 \text{ m/min}$	20 000 kg
			Motorenleistung ges. Total motor output Puissance moteur ohne/without/sans SR 10-190/4		~ 95 kW
			Anschlußleistung Connected power Puissance installée		140 kVA
			Motorenleistung ges. Total motor output Puissance moteur ohne/without/sans SR 10-190/4		~ 130 kW
			Anschlußleistung Connected power Puissance installée		200 kVA



Unsere Vertretung:
Our representative:
Notre représentant:

PROSCHWITZ
B A U M A S C H I N E N

TEREX PEINER GmbH

Gottbillstraße 1-7 · D-54294 Trier
Telefon: ++49 (6 51) 81 00 8 - 0
Telefax: ++49 (6 51) 8 93 00 u. 8 76 40
internet: <http://www.terex-peiner.de>
e-mail: info@terex-peiner.de

simple, available and cost effective™



DIN / FEM

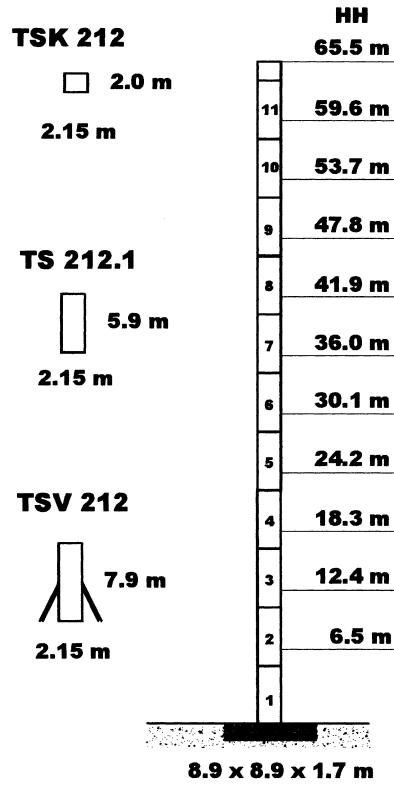
Max. Tragfähigkeit
Lifting capacity
Force de levage

10.0 / 20.0 t

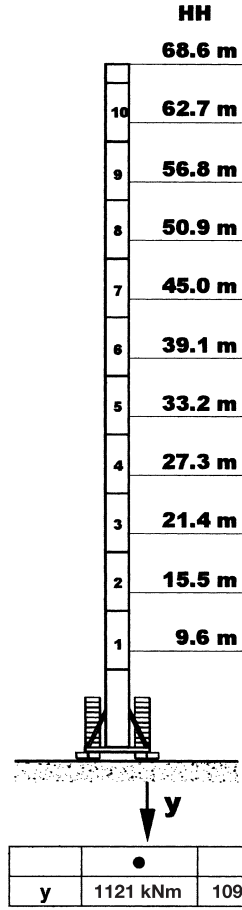


Turmversionen • Tower versions • Versions de tours

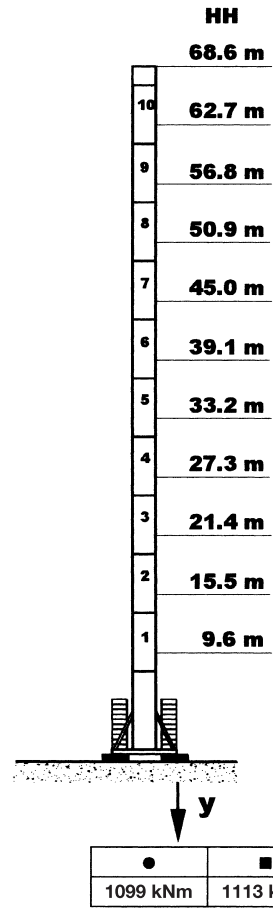
Version: A



Version: E



Version: F



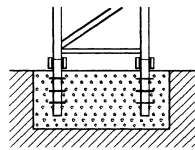
Hakenhöhen HH mit TSK-Schuss
Hook heights HH with TSK-section
Hauteurs sous crochet HH avec TSK-section

● in Betrieb / in operation / en service
■ außer Betrieb / out of operation / sans service

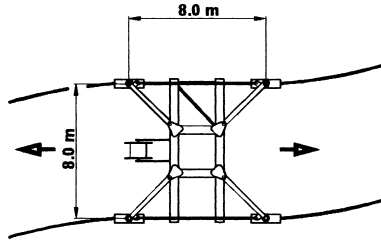
y	●	■
	1121 kNm	1099 kNm

	●	■
	1099 kNm	1113 kNm

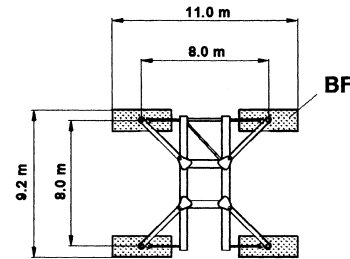
FF 212



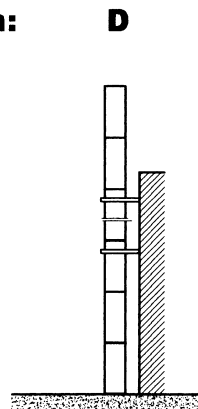
UF 821



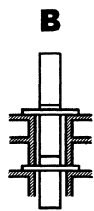
U 821



Version: D



Version: B



Auf Anfrage
On request
Sur demande

Ausladung und Tragfähigkeit • Radius and capacity • Portée et charge

Ausleger Jib Flèche	Max. Tragfähigkeit Max. Capacity Charge max. von from de		Ausladung (m) und Tragfähigkeit (t) Radius (m) and capacity (t) Portée (m) et charge (t)														Ausladung Radius Portée -1.0 m	Tragfähigkeit Capacity Charge -0.7 t		
	3.0 m bis to / à	4.0 m bis to / à	18.0	20.0	23.0	25.0	28.0	30.0	32.0	35.0	40.0	45.0	50.0	55.0	60.0	65.0			70.0	75.0
L9 75.0	31.6 m	17.6 m	20.00	18.11	15.11	13.55	11.69	10.68	10.00	8.92	7.56	6.52	5.69	5.01	4.44	3.96	3.55	3.20		
L8 70.0	35.6 m	19.4 m	20.00	20.00	17.13	15.39	13.32	12.19	11.21	10.00	8.70	7.53	6.59	5.83	5.20	4.66	4.20			
L7 65.0	39.2 m	21.2 m	20.00	20.00	18.97	17.07	14.80	13.57	12.49	11.13	9.75	8.46	7.43	6.59	5.89	5.30				
L6 60.0	42.4 m	22.7 m	20.00	20.00	20.00	18.53	16.09	14.76	13.61	12.14	10.21	9.28	8.16	7.26	6.50					
L5 55.0	45.0 m	24.0 m	20.00	20.00	20.00	20.00	17.12	15.72	14.51	12.96	10.92	9.94	8.76	7.80						
L4 50.0	47.3 m	25.1 m	20.00	20.00	20.00	20.00	18.03	16.56	15.29	13.67	11.54	10.00	9.30							
L3 45.0	45.0 m	25.6 m	20.00	20.00	20.00	20.00	18.52	17.02	15.72	14.06	11.88	10.20								
L2 40.0	40.0 m	26.0 m	20.00	20.00	20.00	20.00	18.85	17.32	16.00	14.32	12.10									
L1 35.0	35.0 m	26.1 m	20.00	20.00	20.00	20.00	18.95	17.42	16.09	14.40										

Ballastierung • Ballast • Lest

Kletterstulpe abgelassen
Lower climbing cage after erection
Baissez la cage télescopique après montage

HH (m)	15.5	21.4	27.3	33.2	39.1	45.0	50.9	56.8	62.7	68.6
Zentralballast BZ Central ballast block BZ Lest de base BZ	79.2	79.2	79.2	79.2	79.2	79.2	79.2	79.2	92.4	105.6
	12 x 6.6	12 x 6.6	12 x 6.6	12 x 6.6	12 x 6.6	12 x 6.6	12 x 6.6	12 x 6.6	14 x 6.6	16 x 6.6

Version F

HH (m)	15.5	21.4	27.3	33.2	39.1	45.0	50.9	56.8	62.7	68.6
Zentralballast BZ Central ballast block BZ Lest de base BZ und / and / et Fundamentballast BF Foundation block BF Bloc de fondation BF	79.2	79.2	79.2	79.2	79.2	79.2	79.2	79.2	92.4	105.6
	8 x 6.6	8 x 6.6	8 x 6.6	8 x 6.6	8 x 6.6	8 x 6.6	8 x 6.6	8 x 6.6	10 x 6.6	12 x 6.6
	4 x 6.6	4 x 6.6	4 x 6.6	4 x 6.6	4 x 6.6	4 x 6.6	4 x 6.6	4 x 6.6	4 x 6.6	4 x 6.6

Gegengewichtsballast • Counterweight • Contrepoids

Ausleger / Jib / Flèche	L1	L2	L3	L4	L5	L6	L7	L8	L9
Gegengewicht BG Counterweight BG Contrepoids BG	18.60	18.60	21.70	21.70	21.70	24.80	24.80	24.80	24.80
	6 x 3.10	6 x 3.10	7 x 3.10	7 x 3.10	7 x 3.10	8 x 3.10	8 x 3.10	8 x 3.10	8 x 3.10