

Geschwindigkeiten • Speeds • Vitesses

FU 4-60/4		$v = 0 \rightarrow 80 \text{ m / min.}$	4.0 kW	400 V
SR 5-90/3		$v = 0 \rightarrow 25 \text{ m / min.}$	2 x 5.0 kW	
K SRA 55/3		$v = 0 \rightarrow 0.75 \text{ min}^{-1}$	2 x 55 Nm	

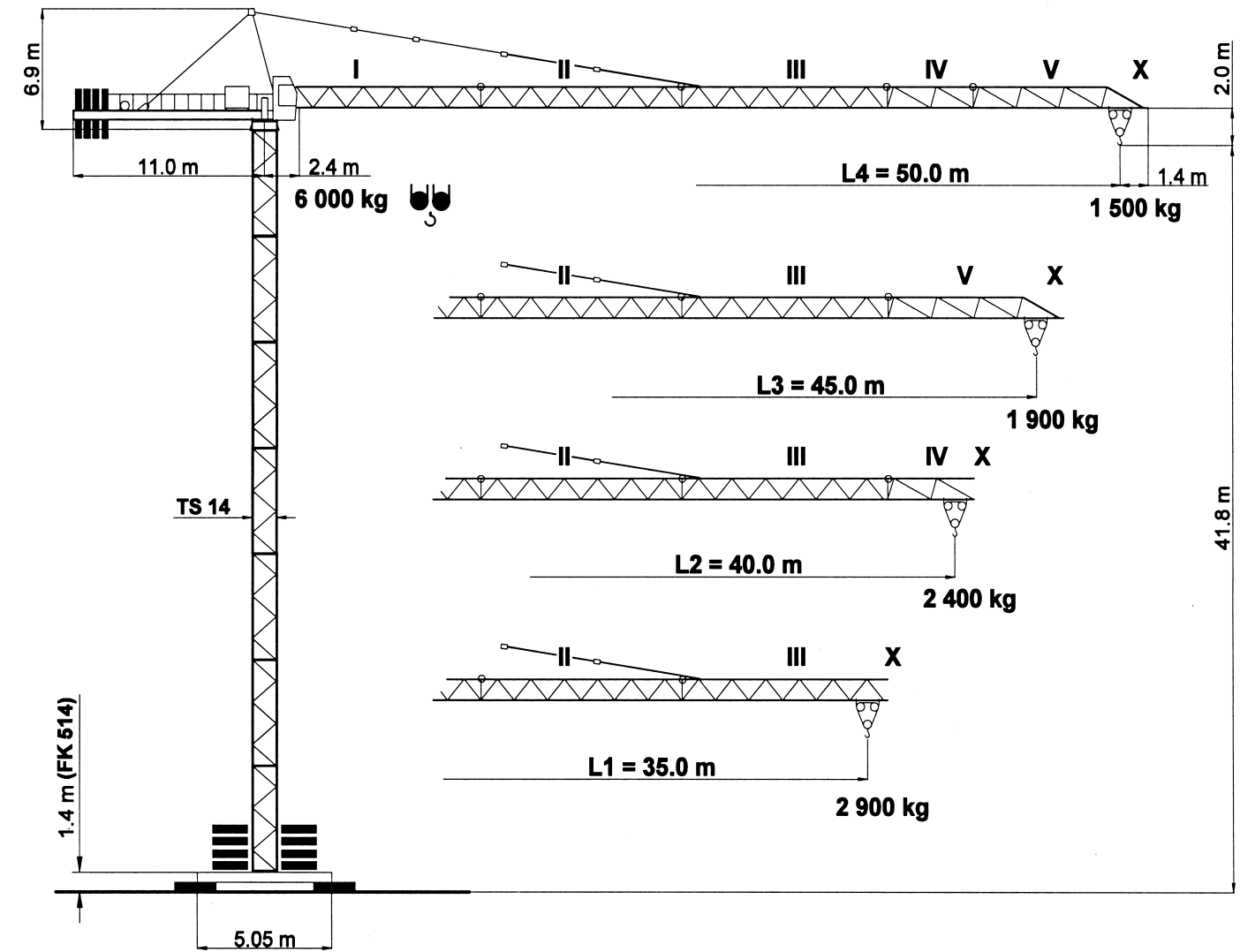
HK max. = 90 m 2 - Lagen / 2 - layers / 2 - couches

Type PU 24-30/3 24.0 kW			$\rightarrow 65 \text{ m / min}$	1 500 kg	$\rightarrow 32 \text{ m / min}$	3 000 kg	Motorenleistung ges. Total motor output Puissance moteur (ohne/without/sans SR 5-90/3) ~ 35 kW
			$\rightarrow 31 \text{ m / min}$	3 000 kg	$\rightarrow 16 \text{ m / min}$	6 000 kg	
			$\rightarrow 7 \text{ m / min}$		$\rightarrow 3 \text{ m / min}$		

Anschlussleistung
Connected power
Puissance installée
180 kVA

HK max. = 85 m 2 - Lagen / 2 - layers / 2 - couches

Type FU 34-30/5 28.0 kW		<p>Traglast [t]</p> <p>Geschwindigkeit [m/min]</p>	<p>Traglast [t]</p> <p>Geschwindigkeit [m/min]</p>	Motorenleistung ges. Total motor output Puissance moteur (ohne/without/sans SR 5-90/3) ~ 40 kW



Unsere Vertretung:
Our representative:
Notre représentant:

PROSCHWITZ
BAUMASCHINEN

TEREX PEINER GmbH

Gottbillstraße 1-7 · D-54294 Trier
Telefon: ++49 (6 51) 81 00 8 - 0
Telefax: ++49 (6 51) 8 93 00 u. 8 76 40
internet: <http://www.terex-peiner.de>
e-mail: info@terex-peiner.de

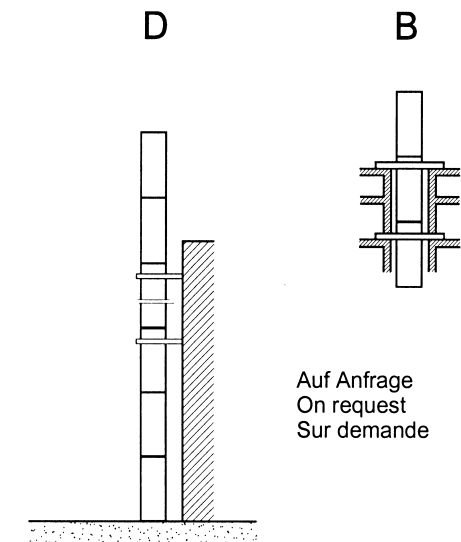
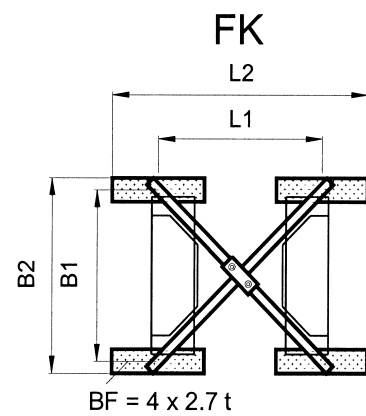
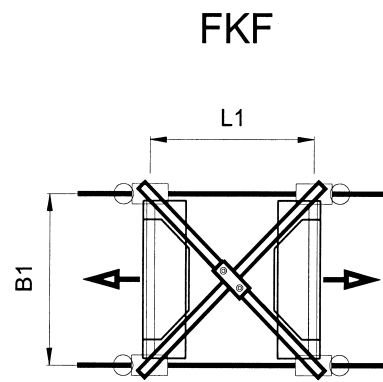
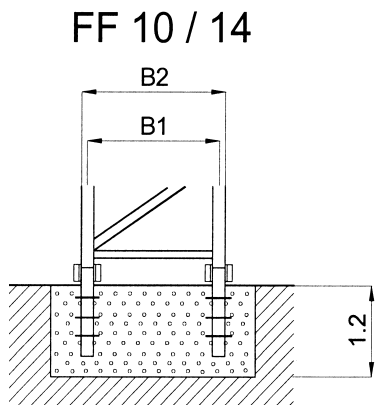
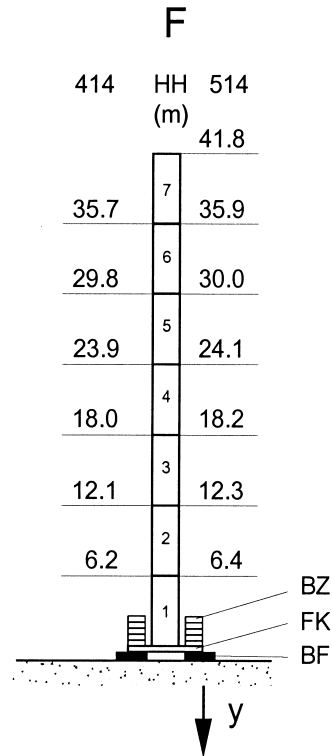
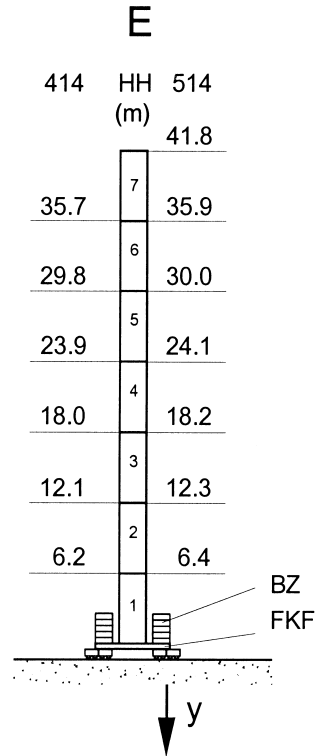
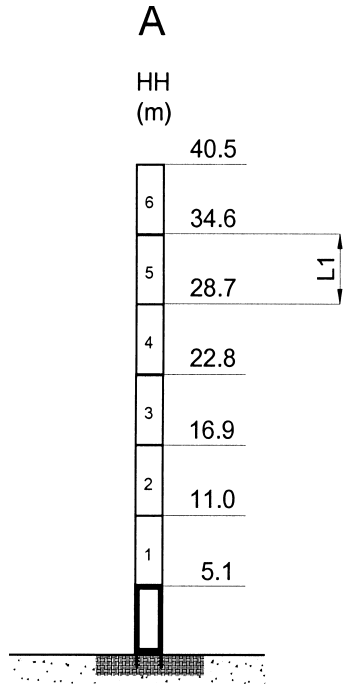


DIN 15018
H1 / B3
Max. Tragfähigkeit
Lifting capacity
Force de levage



simple, available and cost effective™

Turmversionen • Tower versions • Versions de tours



	B1	B2	L1	L2	y / ●	y / ■
	m				kN	
FK 414	4.05	4.75	4.05	6.85	471	501
FK 514	5.05	5.75	5.05	7.85	418	529
FKF 414	4.00		4.05		520	505
FKF 514	5.00		5.05		457	529
TS 14.4	1.40	1.54	11.80			
TS 14.3	1.40	1.54	5.90			
TSV 14.3	1.40	1.54	5.90			

● in Betrieb / in operation / en service
 ■ außer Betrieb / out of operation / sans service

Auf Anfrage
 On request
 Sur demande

Ausladung und Tragfähigkeit • Radius and capacity • Portée et charge

Ausleger Jib Flèche	Max. Tragfähigkeit Max. Capacity Charge max.	Ausladung (m) und Tragfähigkeit (t) Radius (m) and capacity (t) Portée (m) et charge (t)																
m	6.0 t	17.0	19.0	21.0	23.0	25.0	27.0	29.0	31.0	33.0	35.0	37.0	40.0	42.0	45.0	47.0	50.0	
L4 50.0	2.4 - 15.3 m	5.32	4.69	4.19	3.78	3.44	3.15	2.90	2.68	2.49	2.32	2.25	1.98	1.86	1.71	1.62	1.50	
L3 45.0	2.4 - 16.6 m	5.84	5.15	4.60	4.16	3.78	3.46	3.19	2.95	2.75	2.57	2.40	2.19	2.07	1.90			
L2 40.0	2.4 - 17.9 m		5.61	5.01	4.53	4.12	3.78	3.48	3.23	3.03	2.81	2.63	2.40					
L1 35.0	2.4 - 18.4 m		5.78	5.17	4.67	4.25	3.90	3.60	3.33	3.10	2.90							

Ballastierung • Ballast • Lest

Version F – mit Zentralballast und Fundamentballast / with Central ballast block and Foundation block / avec Lest de base et Bloc de fondation – BZ + BF

HH	(m)	6.2	12.1	18.0	23.9	29.8	35.7	
FK 414	(t)	30.8	30.8	30.8	40.8	50.8	60.8	
HH	(m)	6.4	12.3	18.2	24.1	30.0	35.9	41.8
FK 514	(t)	23.0	23.0	23.0	23.0	33.0	43.0	53.0

Version E – mit Zentralballast / with Central ballast block / avec Lest de base – BZ

HH	(m)	6.2	12.1	18.0	23.9	29.8	35.7	
FKF 414	(t)	30.0	30.0	30.0	40.0	50.0	70.0	
HH	(m)	6.4	12.3	18.2	24.1	30.0	35.9	41.8
FKF 514	(t)	22.2	22.2	22.2	22.2	32.2	42.2	52.2

Gegengewichtsballast • Counterweight • Contrepoids

Ausleger / Jib / Flèche	L1	L2	L3	L4
	10.65	11.30	11.30	12.60
BG (t)	3 x 2.50	2 x 2.50	2 x 2.50	
	1 x 3.15	2 x 3.15	2 x 3.15	4 x 3.15